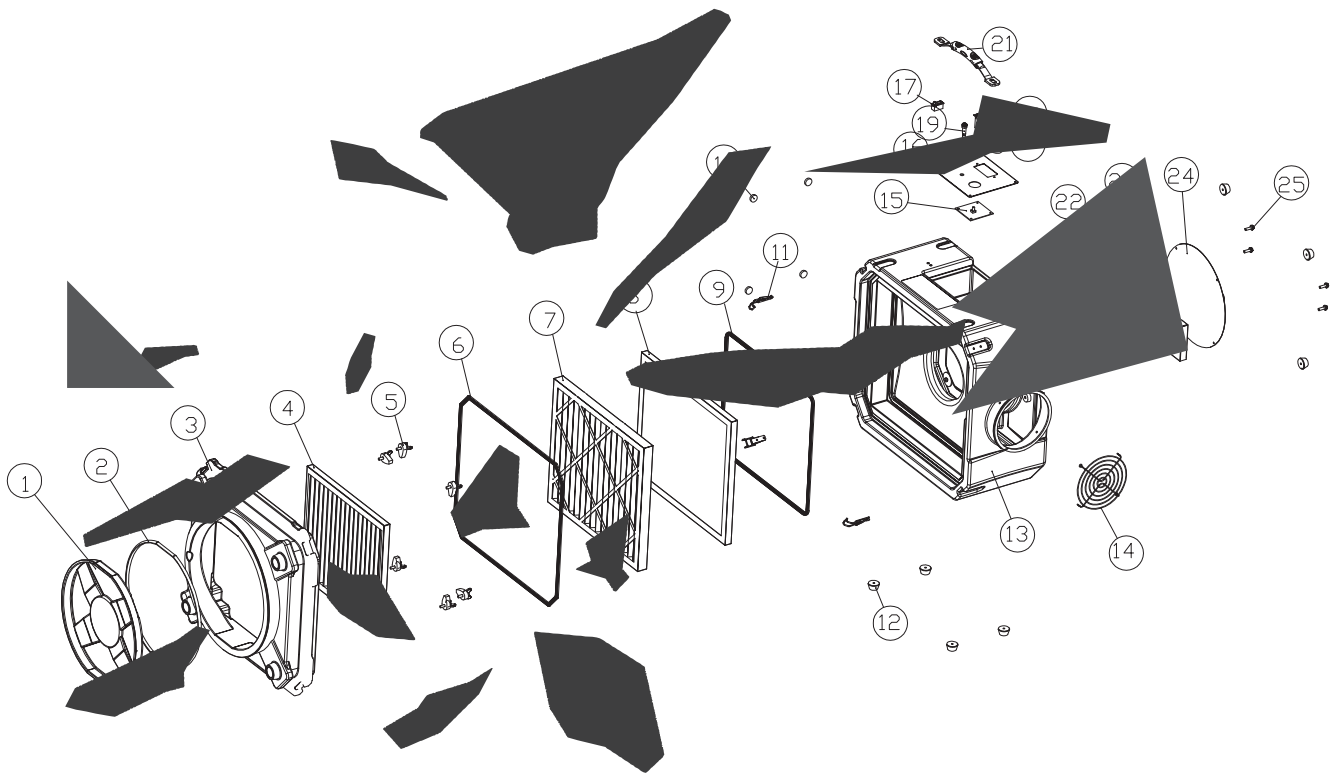


**For the version without covering,
please contact us**



SPARE PARTS LIST

Uni-P EpiFresh 550



No.	Material	Name	Quantity	No.	Name	Material	Quantity
1	dust cover	PE	1	17	power switch	115 60Hz 10A	1
2	dust cover sealing strip	component	1	18	double socket	115 60Hz 10A	1
3	front housing	LLDPE	1	19	warning light	115 60Hz 10A	1
4	primary filter	component	1	20	rotary knob	component	1
5	fixed block	component	8	21	handle	component	1
6	sealing strip	PE	1	22	centrifugal fan	component	1
7	HEPA filter	component	1	23	fan bracket	galvanized sheet	1
8	activated carbon filter	component	1	24	cover plate	galvanized sheet	1
9	back housing seal ring	220V 50Hz	1	25	bracket screw	M6*20	4
10	foot pad	rubber	4				
11	buckle	stainless steel	4				
12	foot pad	rubber	8				
13	back housing	LLDPE	1				
14	air-out net rack	Φ 3 steel wire	1				
15	PCB	component	1				
16	operation panel	galvanized sheet	1				