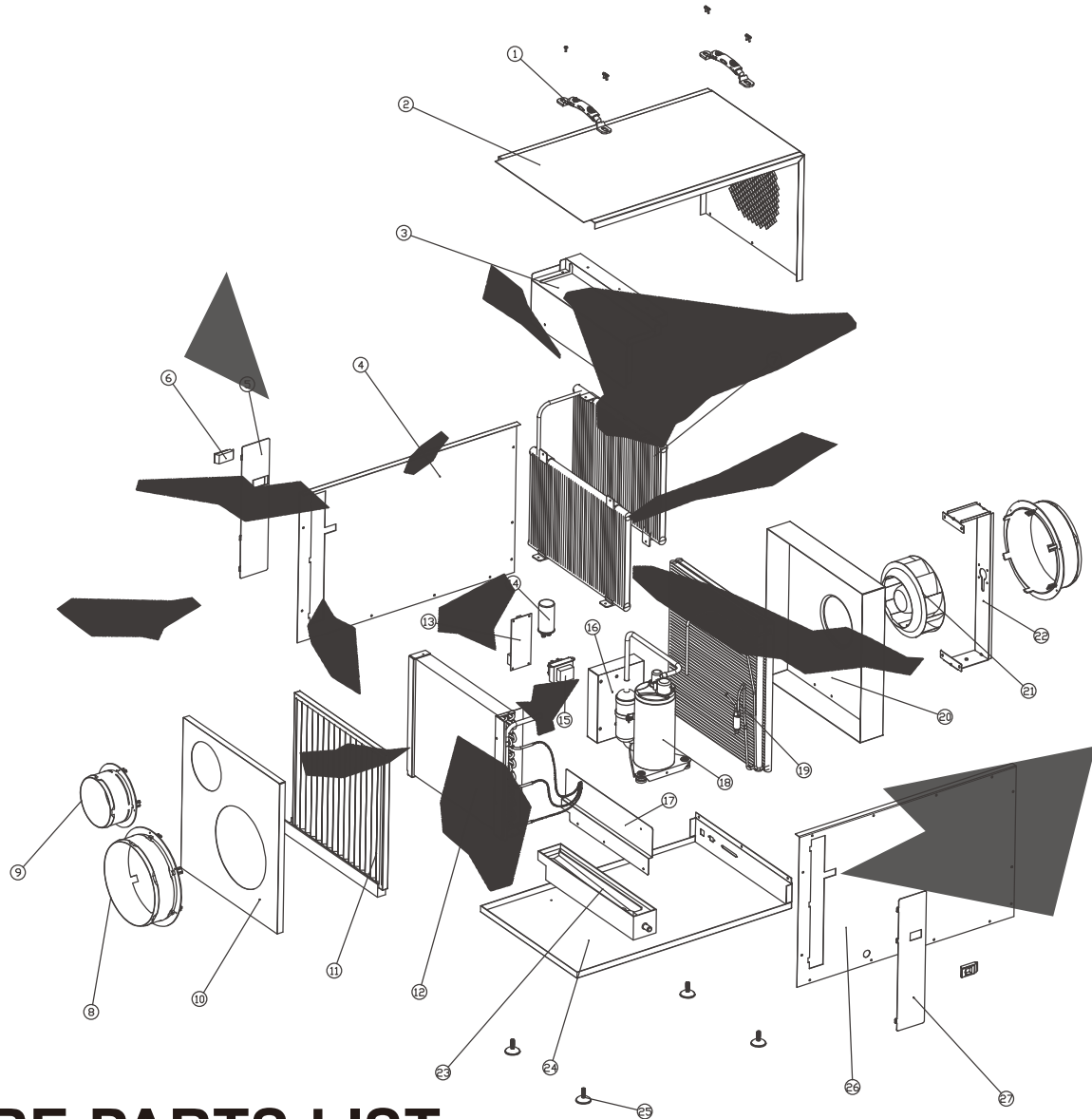


**For the version without covering,
please contact us.**



SPARE PARTS LIST

Uni-P Pro 200X



| No. | Name | Materials | Quantity | No. | Name | Materials | Quantity |
|-----|-----------------------------|------------------|----------|-----|----------------------|------------------|----------|
| 1 | Handle | Components | 2 | 15 | transformer | 115v~24v | 1 |
| 2 | Upper shell Cover | Galvanized sheet | 1 | 16 | Electric control box | Galvanized sheet | 1 |
| 3 | Cover | Galvanized sheet | 1 | 17 | Backplane | Galvanized sheet | 1 |
| 4 | Left side panel | Galvanized sheet | 1 | 18 | compressor | 39A143A | 1 |
| 5 | Filter left cover | Galvanized sheet | 1 | 19 | Condenser | Components | 1 |
| 6 | Door Latch | ABS | 2 | 20 | Wind guide | Galvanized sheet | 1 |
| 7 | Microchannel heat pipe | Components | 2 | 21 | Fan | Components | 1 |
| 8 | 10 inch air inlet tube seat | ABS | 1 | 22 | Motor bracket | Galvanized sheet | 4 |
| 9 | 6 inch air inlet tube seat | ABS | 1 | 23 | Drip tray | ABS | 1 |
| 10 | Inlet panel | Components | 1 | 24 | Chassis | Galvanized sheet | 1 |
| 11 | G4 filter | Components | 1 | 25 | Foot pad | Components | 4 |
| 12 | Evaporator | Components | 1 | 26 | Right side panel | Galvanized sheet | 1 |
| 13 | PCB | Components | 1 | 27 | Filter right cover | Galvanized sheet | 1 |
| 14 | capacitance | 60UF | 1 | | | | |