

SPECIFICATIONS

Fan 6 Blades	Shipping Dim(W*H*D) 17.4"*9.85"*21.65"	Safety ETL CE TUV SGS
Control On/Off Switch With Variable Speed	Display type Digital	Static Pressure 1.7 in./H2O
Voltage 115 VAC	Cord 20 ft Power Cord	Weight 23.1lbs(10.2KG)
Current 1.8 Amps (High Speed)	Airflow Approximately 950	Loading quantity 20":378Sets/40":820Sets/40"HQ:942Sets
Sound Level <69DBA	Outlet 15A UL Rated GFCI Duplex Receptacle	Warranty 1 Year - 100% parts and labor(all components) 2 Years - 100% parts only (all components) 3-7 Years - Materials and workmanship of the housing only.

Applications	Vantix 900	Applications	Vantix 900
Restoration Works	✓	Municipallties	✓
Confined Aears	✓	Mines&Shafts	✓
Constrcution Sites	✓	Tunnels	✓
Crawl Space&Basement	✓	Tank Cleaning	✓
Electric,Gas,Water Utilities	✓	Telephone Crews	✓
Fire Departments	✓	Welding Booths	✓
Industrial Cleaning	✓	Storage Areas	✓
Manholes	✓	Vaul Cleaning	✓

Uni-P Vantix 950 can circulate 950 cubic feet of air per minute(CFM). With the Uni-P Vantix 950, you will never have to worry about stagnant, damp air ever again. With its high-velocity airflow, you will quickly dry any large area or tackle any problem with five versatile positions. Uni-P Vantix 950 lightweight stackable design allows it to fit into any car space easily. It is half the height of the standard carpet dryer. Equipped with an onboard duplex GFCI outlet, a circuit breaker, and superior cord management, all for outstanding performance.



REPLACEMENT PARTS

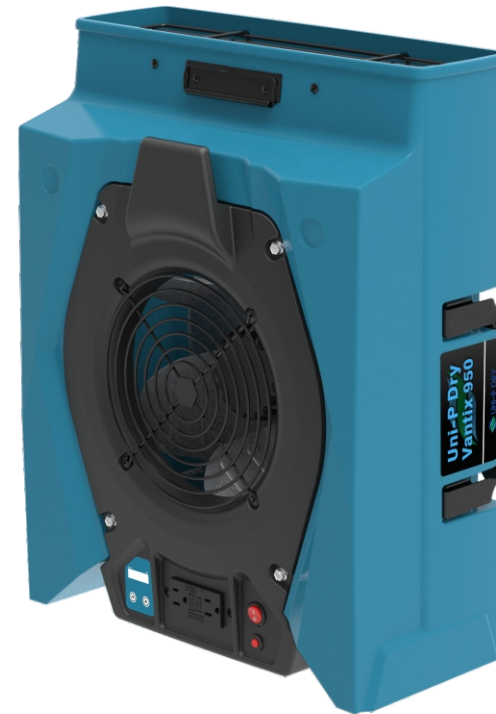
1. Breaker,CKT,12A	2. Switch,On-Off-On	3.Outlet,GFCI,15A
4. Grill Exhaust	5. Pre-Filter	6. Hour Meter
7. Rubber Fee	8. Impeller Assembly	9. Duct,Lay Flat,14"×250'



Unip vantix 950 Air Movers

FEATURES

- ✓ Less than 1.9 amps
- ✓ Automatic hour meter displays site runtime
- ✓ Flex handle
- ✓ 5 drying positions to maximize flexibility
- ✓ Circuit breaker protects air mover and attached devices and prevents nuisance visits to the junction box
- ✓ GFCI protection promotes operator safety in wet applications
- ✓ 20 ft AC cord with cord management
- ✓ Daisy chain up to 6 fans on a single 15 Amp circuit
- ✓ Over 950 CFM
- ✓ Units interlock for ease of stacking during storage and handling
- ✓ Half the height of sandard carpet dryers



Chain up to 6 fans



Operating Position



Ultra Secure Stacking



Compact & Light Weight



Half the height of standard carpet dryers

OTHER FEATURES

- ✓ Maintenance free Bearing Motor
- ✓ Comes with a duct outle and the air volume over 950 CFM
- ✓ Comes with a cord wrap
- ✓ Comes with power on indicator light
- ✓ LCD Display

